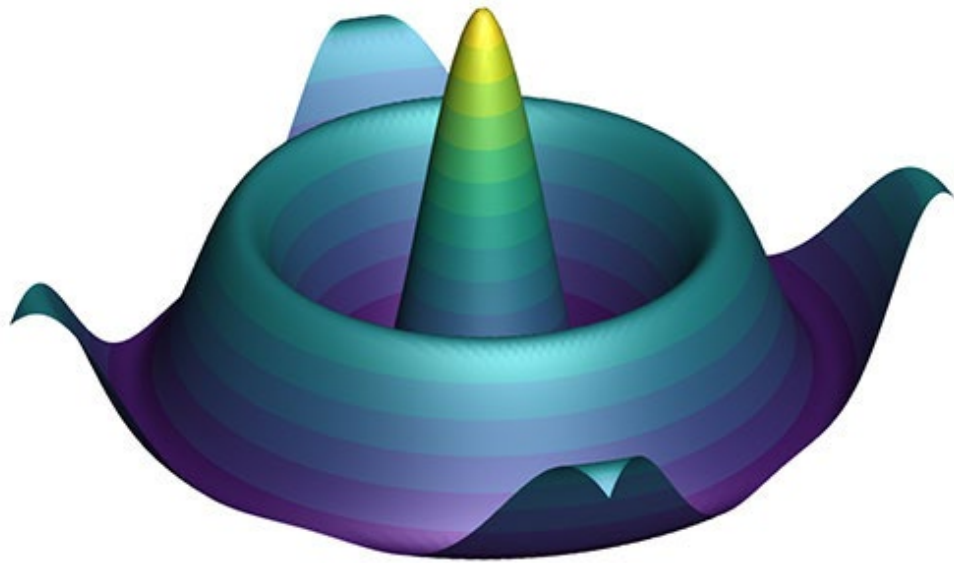


# *Using Tecplot 360 with Excel*

---



**tecplot®**   
*Master the View*

# *Our Presenters*



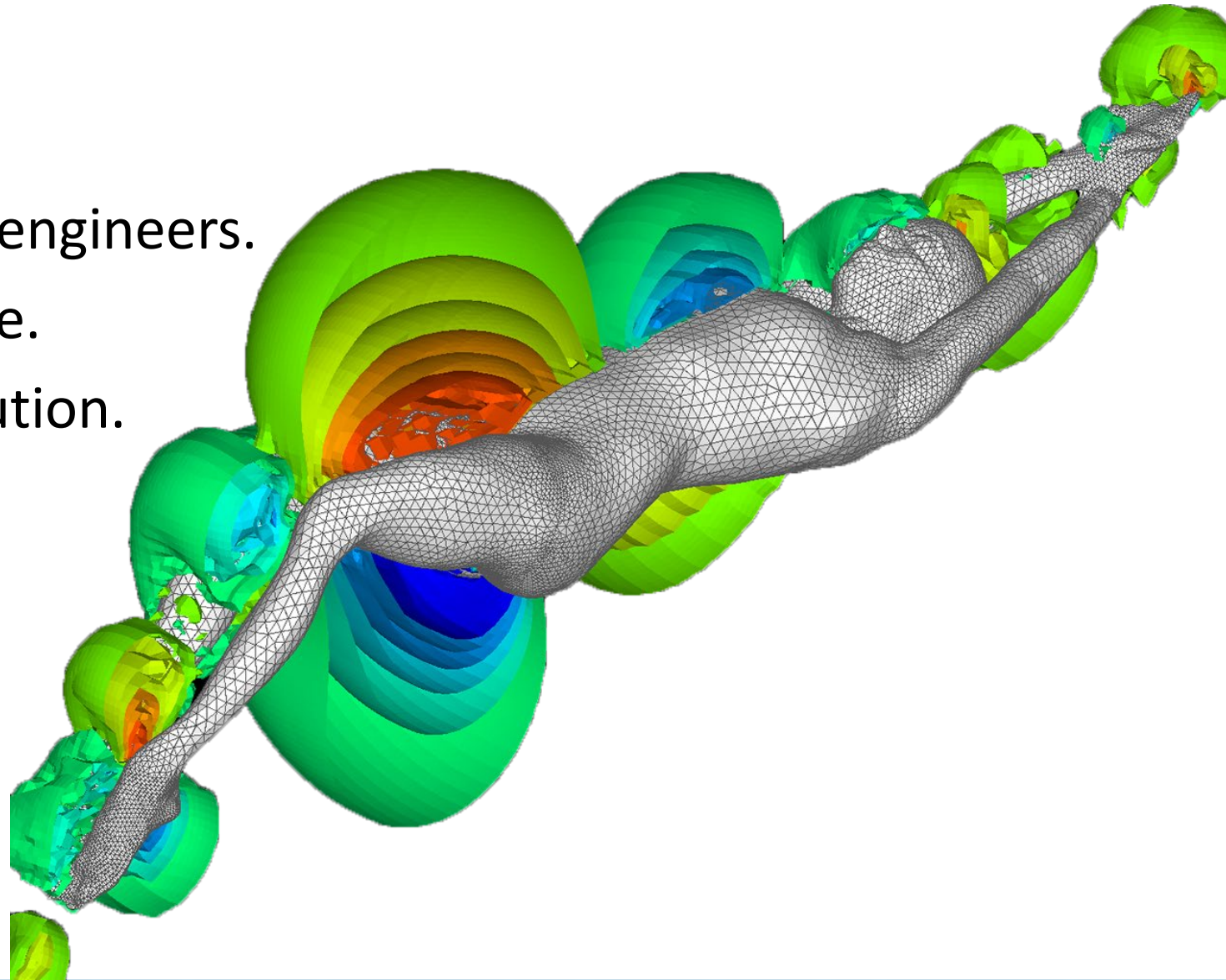
Scott Fowler  
Tecplot Product Manager  
[scottfowler@tecplot.com](mailto:scottfowler@tecplot.com)



Devon Simpson  
Technical Product Engineer  
[support@tecplot.com](mailto:support@tecplot.com)

## *Tecplot at a Glance*

- Founded in 1981 by Boeing engineers.
- 47,000 customers worldwide.
- Most complete desktop solution.
- Dedicated to saving engineers time!



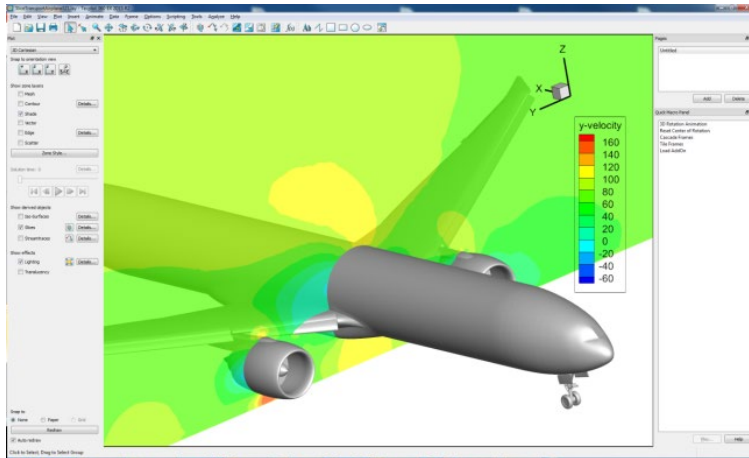


# Tecplot Desktop Solutions

360°

## CFD Visualization & Analysis

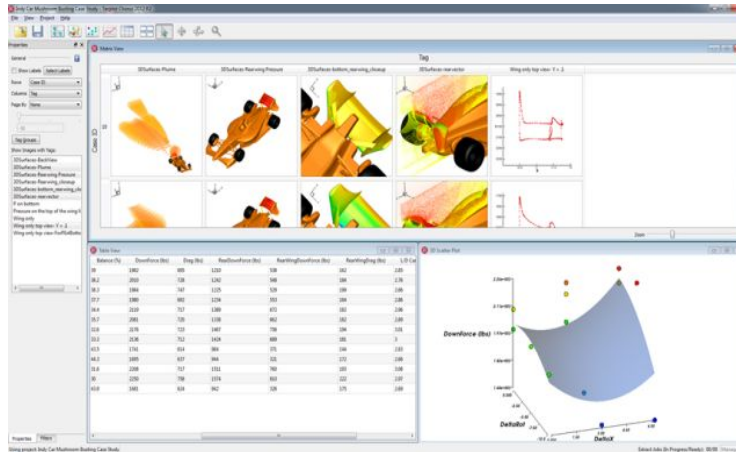
Quickly plot and animate your CFD data exactly the way you want it. You can analyze complex data, arrange multiple layouts, and communicate your results with professional images and animations.



chorus™

## Design Space Exploration

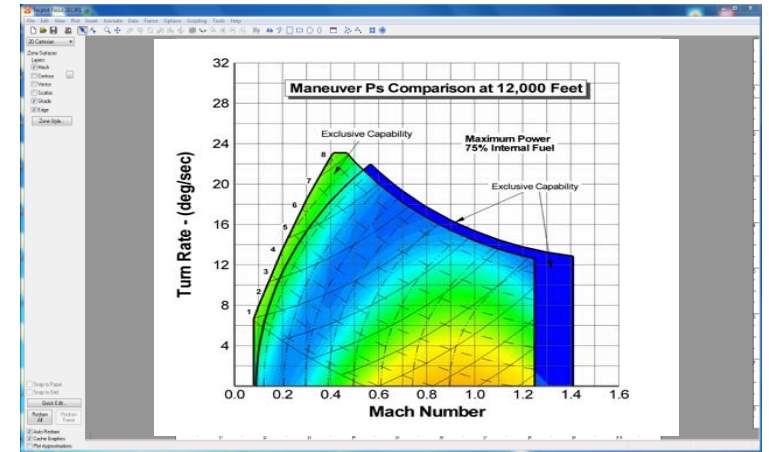
Tecplot Chorus helps you manage and analyze collections of CFD simulations. You can compare your results and evaluate overall system performance in a single post-processing environment.



focus™

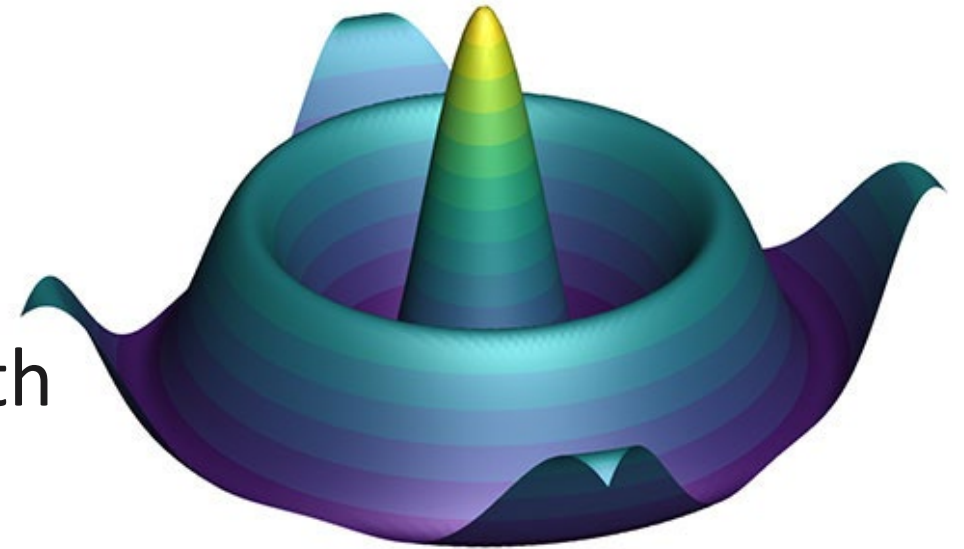
## Test & Experimental Data

Tecplot Focus increases your productivity by automating routine data analyses, XY and 2D plotting tasks, and 3D visualizations. You can communicate your results with brilliant, high-quality output.



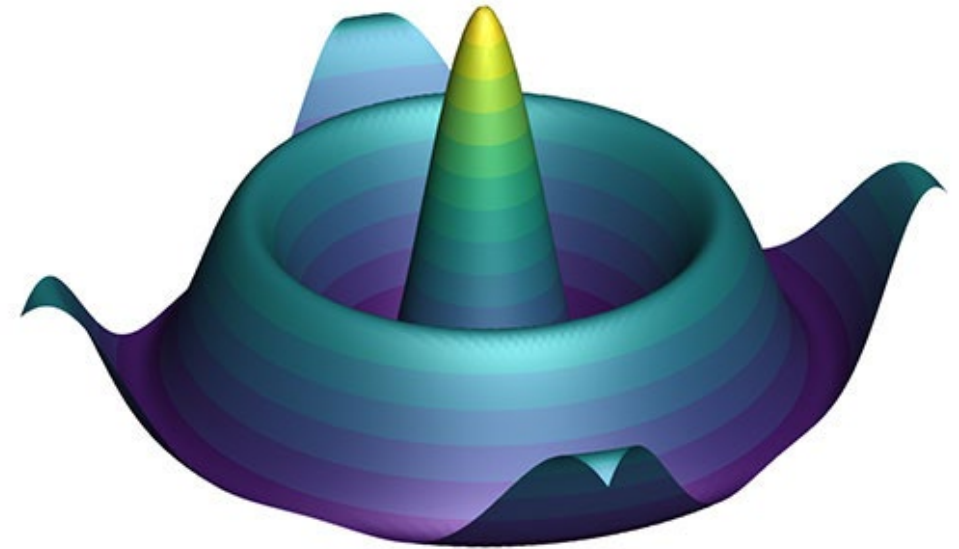
# *Why use Tecplot 360 or Tecplot Focus with Excel?*

- Automation
- Advanced plotting capabilities
- Publication quality (post-script)
- Comparing measured results with simulation results
- LaTeX fonts



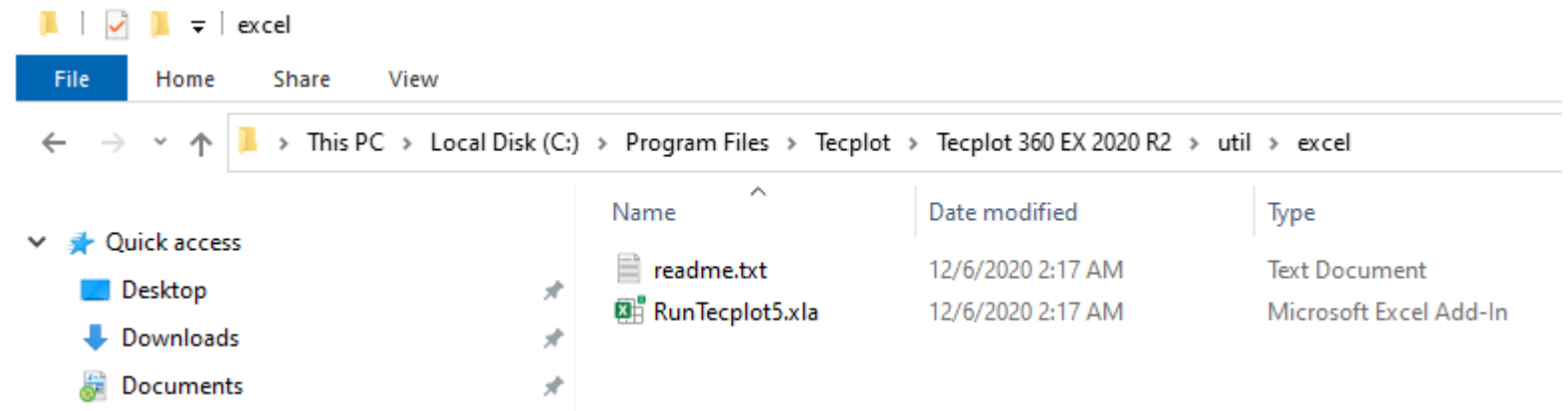
# *Using Tecplot 360 with Excel – Agenda*

- Introduction to the Excel Add-in
- How to enable the Add-in
- Loading Line Data
- Loading 2D Contour data
- How the Add-in differs from the Excel data loader



# *Introduction to the Excel Add-in*

- Windows only
- Launches Tecplot 360/Focus with data selected in Excel
- Handles line and 2D contour data



# Enable the Add-in

The screenshot illustrates the steps to enable the RunTecplotV5.2 add-in in Microsoft Excel:

- Excel Options Dialog:** The 'Add-ins' tab is selected. The 'Inactive Application Add-ins' list shows 'RunTecplotV5.2' with its location as 'C:\...60 EX Beta\util\excel\RunTecplot5.xla'. The 'Go...' button is highlighted.
- Add-ins Available Dialog:** The 'RunTecplotV5.2' add-in is selected in the 'Add-ins available' list. The 'Browse...' button is highlighted.
- File Explorer:** The file 'RunTecplot5.xla' is located in the folder 'C:\Program Files\Tecplot\Tecplot 360 EX 2020 R2\util\excel'.



## *How the Add-in differs from the Excel data loader*

- The Excel Loader:
  - Is faster than the add-in
  - Is automatable (but you need to know the row/column count)
  - Can append data from multiple files
  - Works for \*.xls files only
  - Can't handle formulas
  - Can't handle multiple zones in the same way as the add-in

# Next Webinar:

## Visualizing Higher Order Elements

*with Dr. Scott Imlay*

**Wednesday, February 24, 10 AM PDT**

**Register:** [www.tecplot.com/support/tecplot-training/](http://www.tecplot.com/support/tecplot-training/)

# Questions?

Tutorials: [www.tecplot.com/videos](http://www.tecplot.com/videos)

Training: [www.tecplot.com/support/tecplot-training/](http://www.tecplot.com/support/tecplot-training/)

Support: North America: [support@tecplot.com](mailto:support@tecplot.com)  
Europe/Western Asia: [support-eu@tecplot.com](mailto:support-eu@tecplot.com)  
Distributors: [www.tecplot.com/distributors/](http://www.tecplot.com/distributors/)

