



## Installation Guide Tecplot Focus 2025 Release 1

Tecplot, Inc.

# Table of Contents

- Introduction ..... 2
  - Overview ..... 2
- Getting Started ..... 2
  - My Tecplot ..... 2
  - Technical Support ..... 2
  - License Number ..... 3
  - System Recommendations ..... 3
  - Supported Platforms ..... 4
  - Rendering and Troubleshooting ..... 4
- Windows Installation ..... 4
- Mac Installation ..... 6
  - Using Tecplot Focus from the Command Line ..... 7
  - Keyboard and Mouse Shortcuts ..... 7
  - Multiple Instances ..... 8
- Linux Installation ..... 8
  - Linux Installation Instructions ..... 8
  - Optional Variable Setup ..... 9
  - Starting Tecplot Focus ..... 10
  - Running Tecplot Focus Remotely ..... 10
- Installing LaTeX ..... 11
- Licensing ..... 11
  - Entering Your License ..... 11
  - Evaluation License Setup ..... 13
  - Single-User License Setup Using An Activation Code ..... 14
  - Single-User License Setup Using A License File ..... 14
  - Network License Setup ..... 15
- Useful Information ..... 16
  - User Documentation Sources ..... 17
  - License Type Definitions ..... 17
  - Using Licenses Over a Network ..... 18
  - Licensing Issues ..... 18
  - Obtaining License Key Files ..... 18
- Copyright ..... 20

# Introduction

## Overview

Welcome to Tecplot Focus! This guide contains instructions to help you successfully install Tecplot Focus and enter your licenses. To complete the installation process, a basic understanding of file editing, folder navigation, path names, environment variables, and shortcuts/aliases is useful.

The Tecplot Focus installation is available primarily as a download. Download the setup file corresponding to your operating system from [My Tecplot](#) to begin. If you have difficulty downloading the installation file, contact [Technical Support](#) for help.



Tecplot Focus uses the Reprise License Manager. If you are upgrading from Tecplot Focus 2009 R1 or earlier, we suggest uninstalling older versions of Tecplot Focus after your new installation is fully operational.

Tecplot Focus uses the Reprise License Manager to manage licensed use of the product. The first time you run Tecplot Focus after a fresh installation, you must provide an activation key or valid license file (for a **Single-User** license), or the address of a Reprise License Manager server (for a **Network** license).

If you have a **Network** license of Tecplot Focus, one machine on your network will need to have the Reprise License Manager server installed. Refer to the [RLM Installation Guide](#) for instructions on installing and configuring the Reprise License Manager server for a **Network** license.

## Getting Started

This chapter includes information you need to know before beginning your installation. Refer to the following chapters for platform-specific installation instructions.

## My Tecplot

My Tecplot is Tecplot's one-stop portal that allows you to download software, manage your license keys, and more. Visit it at [my.tecplot.com](http://my.tecplot.com).

## Technical Support

If you have difficulty performing the installation, review the [Useful Information](#), then visit our detailed, searchable knowledge base online at [kb.tecplot.com](http://kb.tecplot.com). You can also contact our responsive Technical Support Team by the following methods:

- Internet: [www.tecplot.com/support](http://www.tecplot.com/support)
- E-mail: [support@tecplot.com](mailto:support@tecplot.com)

- Telephone: +1-425-653-9393

Please include your license number when contacting Support.

## License Number

If you need to obtain a license file for Tecplot Focus, you will need your license number. This number identifies you as a Tecplot customer and is different from the activation code or license key file you receive to activate a single-user license. If you do not have a license number, this may be because someone else in your organization purchased the license. If you purchased a single-user license or are the listed contact on your account, [Technical Support](#) can help you find your license number.

## System Recommendations

We recommend, at a minimum:

### Processor

2 GHz, 64-bit

### Storage

850 MB free disk space and 4 GB



On Windows systems, some components will be installed on **C:** even if the product is installed on another drive. Additionally, the installation components are always unpacked to **C:**, although these are removed after installation. Of the total disk space requirements, 500 MB are required on **C:** and 350 MB on the installation drive, for a total of 850 MB on **C:** if the product is installed to **C:**.

### Graphics

An OpenGL-accelerated graphics card

### Display

Resolution of 1600x1200 or more suggested

If you work with larger data sets, more RAM, more disk space, and additional processor cores will help.

Please make sure that you are using the latest graphics drivers compatible with your hardware and operating system. These can be obtained from your graphics adapter vendor's Web site. Old versions may have issues with Tecplot Focus, especially with larger data sets.

- NVIDIA: [www.nvidia.com/Download/index.aspx](http://www.nvidia.com/Download/index.aspx)
- AMD: [www.amd.com/en/support](http://www.amd.com/en/support)
- Intel: [www.intel.com/content/www/us/en/download-center](http://www.intel.com/content/www/us/en/download-center)

# Supported Platforms

Tecplot Focus is built, tested, and fully supported only on the following operating systems and platforms. The software may also run on operating systems similar to the ones listed here, especially later releases of the same platforms, but our ability to provide support for such installations may be limited.

## Windows

- Windows 10, 11

## macOS

- 13.6 (Ventura), 14.0 (Sonoma), 15.0 (Sequoia)
  - Only macOS machines with Apple Silicon processors are supported.



Tecplot Chorus (360 Only) is not available for Mac.

## Linux

- Red Hat Enterprise Linux 8, 9
- Rocky Linux 8, 9
- Ubuntu 20.04 LTS, 22.04 LTS, 24.04 LTS
- SUSE Linux Enterprise Desktop (SLED) 15

## Platform End of Life Updates

- Windows 10 support ends October 14th, 2025. Tecplot software released after this date will not be supported on Windows 10.
- Intel-based macOS is no longer supported.
- CentOS 7 is no longer supported.
- Red Hat Enterprise Linux 7 is no longer supported.

# Rendering and Troubleshooting

If there are rendering issues within the plot area, trouble exporting images or a warning is presented on launch, see Troubleshooting Appendix in Tecplot Focus User Manual for more detail. Or for Chorus (360 Only) Troubleshooting Appendix in the Chorus User Manual.

# Windows Installation

1. **Download Setup** Download the setup file from [My Tecplot](#).



**SYSTEM ADMINISTRATORS**

To silently install Tecplot Focus on a workstation, open a command line using an Administrator account and navigate to the folder that contains your saved setup file. Then type:

```
tecplotfocus2025r1_win64.exe /S
```

Tecplot Focus is installed with default options.

If you will be using Tecplot Focus with a **Network** license, you must install the RLM license manager on a network server. See the [RLM Installation Guide](#) for details.

2. **Launch Setup** Navigate to the location of your downloaded setup file. Then right-click the **.exe** file and choose "Run as Administrator" from the context menu. (You will be asked to provide an administrator account and password if your account does not have the necessary privileges.)

After the setup program starts, click **Next** to begin.

3. **Products to Install** For Tecplot 360 only, Tecplot Chorus will be installed by default. If you do not wish to install Tecplot Chorus, you can uncheck it here.
4. **License Agreement** Read and agree to the license agreement.
5. **System Path** Indicate whether you want the Tecplot Focus executable added to the PATH variable for all users or for just the current user, or not at all. Doing this allows you to easily launch Tecplot Focus from the command line without having to specify the full path of the executable. (If you will not be doing this, it technically doesn't matter which you choose.)

On this page, you can also indicate whether to create a shortcut on the Windows desktop to launch Tecplot Focus.

6. **Destination Folder** Tecplot Focus and Tecplot Chorus (360 Only) (if selected) will install into separate subdirectories in this folder. Accept the default destination folder, or browse to set a new folder (by using the Change button).
7. **Start Menu Folder** Indicate what folder Tecplot Focus should appear in under the Windows Start menu. For most users, the default is appropriate.
8. **Install the Program** Click the **Install** button. Installation will take a few moments. After installation completes, click **Finish** to close the setup program.

The first time you run Tecplot Focus or Tecplot Chorus (360 Only) after a fresh installation, you will be prompted to set up your license . See [Licensing](#) for further instructions.



Tecplot Chorus, Tecplot SZL Server and PyTecplot are only available with Tecplot 360 with an active TecPLUS subscription service. The Tecplot 360 installer includes all three of these products. Tecplot Focus users who want the capabilities and features of

Tecplot Chorus, Tecplot SZL Server or PyTecplot are encouraged to upgrade to Tecplot 360. For details, please refer to the documentation for [Tecplot 360](#).

## Mac Installation

Follow the instructions below to install Tecplot Focus on a Macintosh system. Refer to the [Release Notes](#) for further information on running Tecplot Focus under Mac.

To install Tecplot Focus on Mac, double-click the **.dmg** file you have downloaded. This is a disk image file which will be mounted as a drive; this drive then automatically opens in Finder.



In the Finder window, simply drag the Tecplot Focus folder on top of the Applications folder in the same window, then release the mouse button. (The actual name of the folder will include a version number, which is not shown above.)



Tecplot Chorus, which is available to Tecplot 360 users via the TecPLUS subscription service, is not available for Mac. You will need to run Tecplot 360 on Windows or Linux if you want access to Tecplot Chorus.

To run Tecplot Focus after installation, double-click the Tecplot Focus application icon in the installation folder, **/Applications/Tecplot Focus 2025 R1**.

The first time you run Tecplot Focus after a fresh installation, you will be prompted to set up your license. See [Licensing](#) for further instructions.

On Mac, the Host ID file needed to obtain a license key file is generated only when you click Request

License in the license dialog. You must launch Tecplot Focus and click Request License to generate the Host ID file before you can request a license key. If you are using an activation code, this is not necessary.

## Using Tecplot Focus from the Command Line

You may run Tecplot Focus from the command line; for example:

```
open "/Applications/Tecplot Focus 2025 R1/Tecplot Focus 2025 R1.app"
```

You may follow this command with the paths of any Tecplot-format layout, macro, or data files to open. Tecplot Focus will launch and then open the specified files, if any.

However, to run in batch mode, Tecplot requires the full path to the executable followed by the **-b** flag:

```
"/Applications/Tecplot Focus 2025 R1/Tecplot Focus 2025 R1.app/Contents/MacOS/Tecplot  
Focus 2025 R1" -b mymacro.mcr
```

If you often use Tecplot Focus from the command line, it is convenient to add an alias of the full executable path like the following in `~/.bashrc`:

```
alias tecfocus="/Applications/Tecplot Focus 2025 R1/Tecplot Focus 2025  
R1.app/Contents/MacOS/Tecplot Focus 2025 R1"
```

With this alias defined, you can open Tecplot Focus from a terminal by typing **tecfocus** followed optionally by the files to be opened.

If you set the file associations for Tecplot-format files as described in the following section, you can open such files from the command line more simply. For example:

```
open /path/to/mylayout.lay  
open mylayout.lay
```

This opens the specified file in the default application, Tecplot Focus. In this case, the **tecfocus** alias is not needed.

## Keyboard and Mouse Shortcuts

Keyboard shortcuts described in the Tecplot Focus User's Manual often use the Control key (for example, **Ctrl** + **C** to copy text to the clipboard). Mac users should use the Mac-standard Command key for these shortcuts instead.



If a keyboard shortcut calls for the Alt key, use the Option key. Many Macs have the word Alt on the Option key already, but some keyboards may only have Option.

If your mouse has only a single button, hold down Control while clicking to generate a right-click.

## Multiple Instances

Right-click the Tecplot Focus icon in the Mac dock to access a menu that lets you launch an additional instance in its own window. Note that for a network license, each new instance consumes an additional license seat.

## Linux Installation

To install Tecplot Focus on a Linux operating system, we suggest that you run as **root** (using the **su** or **sudo** command). Running as root allows you to complete the installation in a system directory, such as in **/usr**, so it can be used by all users of the system. Follow the steps in this chapter to install Tecplot Focus on a Linux operating system.

## Linux Installation Instructions

To install Tecplot Focus on a Linux system, perform these steps:

1. **Download Setup** To download your installation, save the setup script from the download site to a temporary folder on your hard drive. The setup file's name varies based on the version of the product being installed, but it starts with **tecplotfocus** and ends with **.sh**.
2. **Navigate to Setup** Use the command line to navigate into the directory where you downloaded the setup script.
3. **Launch Setup** Run the command:

```
sh tecplotfocus*.sh
```

4. **License Agreement** Read and accept the license agreement.
5. **Home Directory** Enter the full path to the folder in which you wish to install. Products are installed in subdirectories under this folder.

Installation will require just a few moments.

The first time you run Tecplot Focus or Tecplot Chorus (360 Only) after a fresh installation, you will be prompted to set up your license. See [Licensing](#) for further instructions.



Tecplot Chorus, Tecplot SZL Server and PyTecplot are only available with Tecplot 360 with an active TecPLUS subscription service. The Tecplot 360 installer includes all

three of these products. Tecplot Focus users who want the capabilities and features of Tecplot Chorus, Tecplot SZL Server or PyTecplot are encouraged to upgrade to Tecplot 360. For details, please refer to the documentation for [Tecplot 360](#).

## Optional Variable Setup

It may be useful to add Tecplot Focus to your PATH variable so you can easily run it from the command line without having to specify the full path to the executable file. To do this:

1. Add the following to your `.profile` (for Bourne or Korn) or `.bash_profile` file (for Bash) in your login home directory, creating the file if necessary:

```
export PATH=/path/to/focus/bin:$PATH
```

If installed, the `bin` directory of Tecplot Chorus (360 Only) may be added to the `PATH` environment variable as well.



These procedures assume you are using the Bash shell, which is the default in most Linux installations. If you do not know what type of shell you are using, type the following command: `echo $SHELL`. A response of `/bin/ksh` means you are using the Korn shell, `/bin/sh` indicates the Bourne shell, and `/bin/bash` means you are using the Bash shell.

2. Activate the change to your `.profile` file by running the following command (choose the commands appropriate to your shell):

### For the Korn or Bourne shells

```
. ~/.profile
```

### For the Bash shell

```
. ~/.bash_profile
```

When invoked as a login shell, Bash looks in these files in your home directory (in order) for initialization commands:

- `profile`
- `.bash_profile`
- `.bash_login`
- `.profile`

Some systems may not contain a `.bash_profile` file. If this is the case, you may create the file, or put the Tecplot PATH commands in one of the other files above. Use the syntax already described.

## Starting Tecplot Focus

To run Tecplot Focus, navigate to the `bin` folder of the Tecplot Focus installation and type `./tecfocus`. If you have set the `PATH` variable to include the Tecplot Focus `bin` folder, as described previously, you do not need to change the directory before typing `tecfocus`. In this case, it is often more convenient to change to the directory containing the data files you will be working with before starting Tecplot Focus.

## Running Tecplot Focus Remotely

If you purchased a **Network** license, you can run Tecplot Focus remotely using the X Window System. By default, X Window System programs send their output to the display identified by the `DISPLAY` environment variable.

- If your login shell is the Bourne or Korn shell, type:

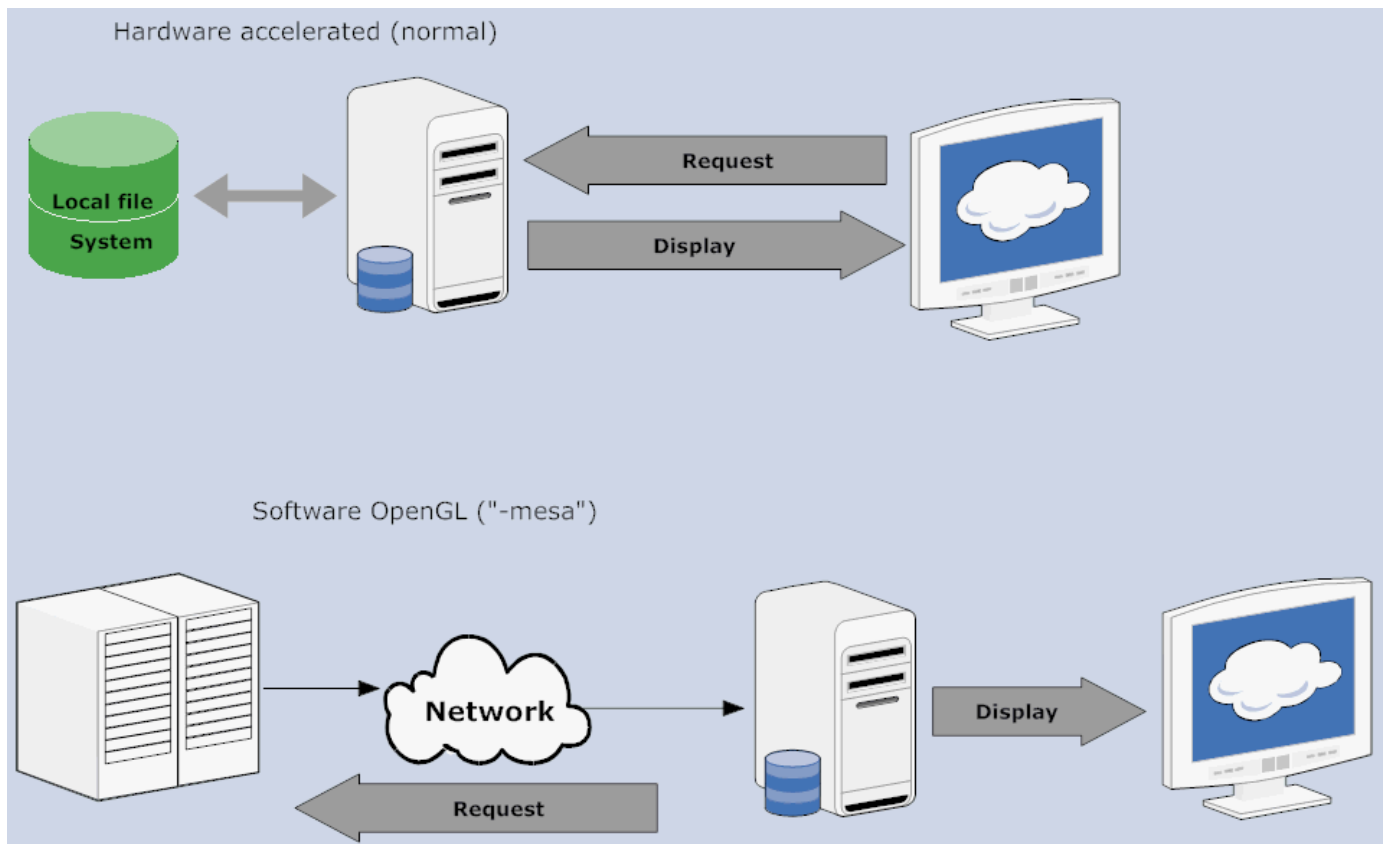
```
export DISPLAY=hostnameofclientmachine:0
```

- Or, use the `-display` flag on the command line. For example:

```
tecfocus -display computername:0
```

If you purchased a **Single-User** license, Tecplot Focus must run and display on the same computer.

If you choose to work remotely with complex geometries on the order of 50M polygons or elements, using the `--mesa` option will force graphics rendering to occur in software on the computer running Tecplot Focus rather than at the workstation displaying it. This may result in better display performance. At least two clients, VNC and ThinAnywhere, automatically use this option. However, with other clients, like Exceed, Reflection, or Cygwin, you will need to specify the `--mesa` flag to enable software rendering. This diagram illustrates the difference in where rendering is done during remote access:



Running Tecplot Focus in batch mode (using the `-b` flag) also runs with software graphics rendering, just as the `--mesa` mode does. In batch mode, Tecplot Focus does not display the graphics.

## Installing LaTeX

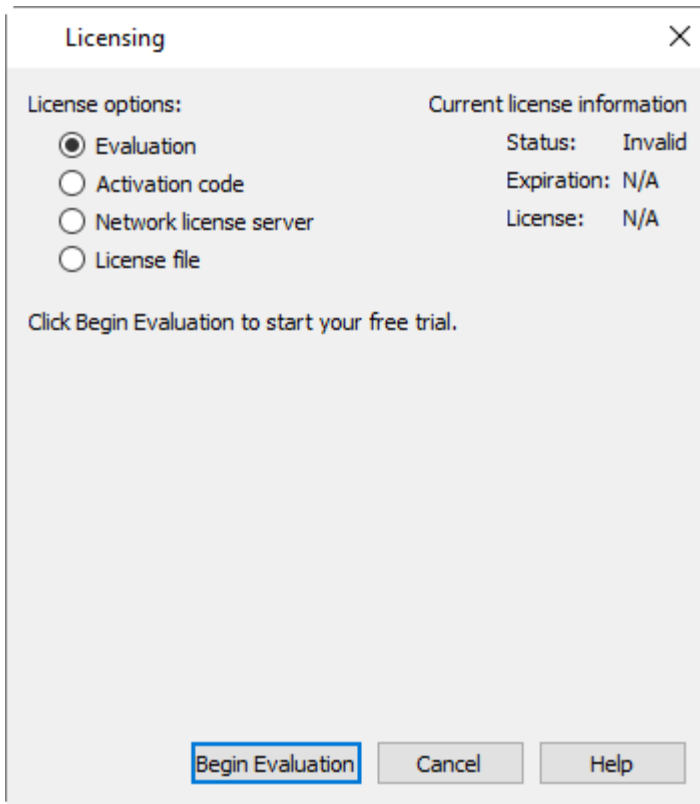
A few requirements are needed before LaTeX outputs can be generated. The first is to have a LaTeX engine installed. LaTeX distributions are largely free and available on many different operating systems. For installation recommendations, see the LaTeX Project page ([www.latex-project.org/get](http://www.latex-project.org/get)).

The second requirement is to have the `tecplot_latex.mcr` file correctly configured in your installation directory. Each LaTeX engine will come configured with different ways to parse commands. Details of how to configure it can be found in the `tecplot_latex.mcr` file. The default settings have been tested with MiKTeX and TeXLive engines. If using the default install options for MiKTeX, the `zhmetrics` package will also need to be installed.

## Licensing

### Entering Your License

The first time you launch Tecplot Focus after a fresh installation, you will be prompted to enter your license information:



You will also see this dialog if Tecplot Focus cannot validate your license information (for example, because your evaluation license has expired, or because the network license server is not available). Additionally, you may change your license information at any time from the **Help** menu.

## SYSTEM ADMINISTRATORS

Tecplot products store their license configuration file in a platform-specific location. Each Tecplot product has its own license configuration file.

### Windows

`C:\Users\<username>\AppData\Local\Tecplot`

### Linux

`~/.local/share/data/tecplot`

### Mac

`~/Library/Application Support/Tecplot`

The above directories are specific to the individual workstation users. If you want all users of the computer to use the same license configuration for a given Tecplot product, you may move the license configuration file to the product installation directory after initial license setup.

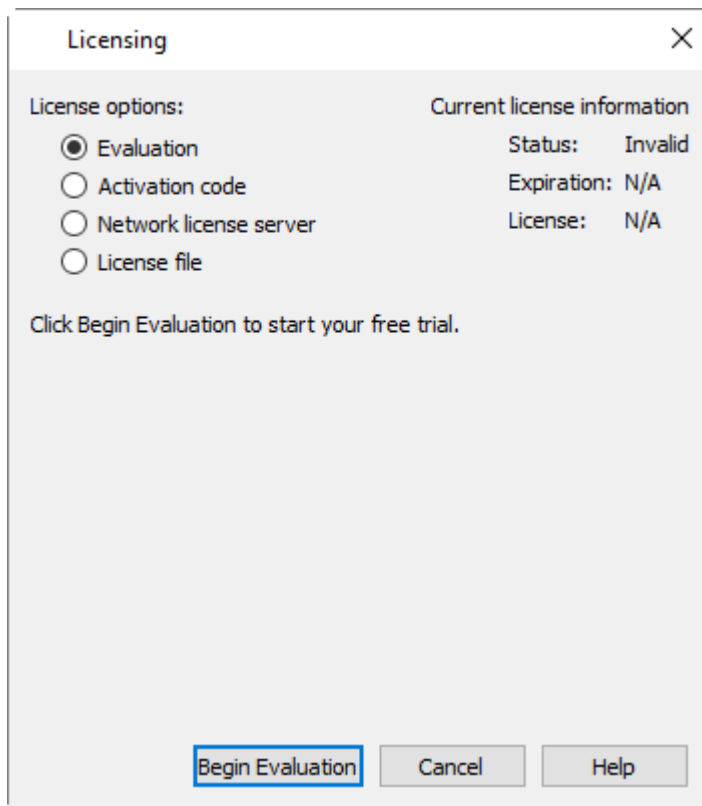
To prevent users from editing the license configuration, you may then change the permissions on the license file to be writable only by an administrator or root user.



How you install your license information depends on what type of license you have.

- If you wish to evaluate the product before purchasing, you may obtain an **Evaluation** license with a single click.
- If you have an Activation Code for a **Single-User** license and have Internet access, you enter the activation code.
- If you have a License File for a **Single-User** license, you select the license file, or paste the key text into the license field.
- If you have a **Network** license, you specify the server name and port number of the RLM license server on your network.

## Evaluation License Setup

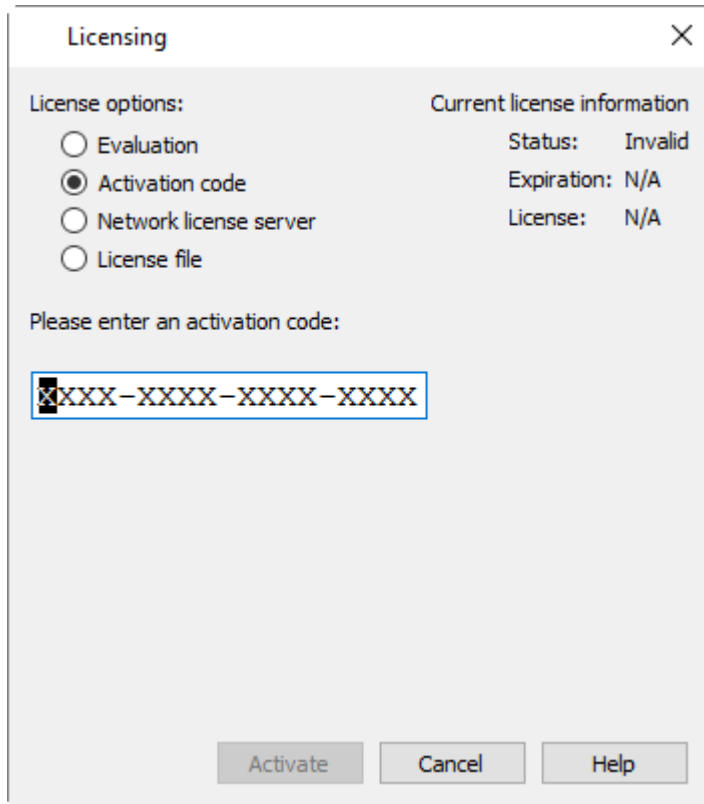


To obtain a time-limited evaluation license key so you can try the product before purchasing, make sure the "Evaluation" license type is selected in the Licensing dialog, then click **Begin Evaluation**. The product evaluation period begins. You will see a notice on the product's Welcome Screen indicating when your evaluation license will expire.

This procedure requires an active Internet connection. If for some reason you cannot fully evaluate Tecplot Focus on an Internet-connected computer, or if you need additional time to complete your evaluation, contact [Tecplot Support](#) for a time-limited single-user license file, which may then be installed using the instructions in the following section.

# Single-User License Setup Using An Activation Code

If you received an activation code for your product, allowing it to be activated over the Internet, follow the instructions below. If you received a license key file, or if the workstation you have installed the product on does not have Internet access, see [Single-User License Setup Using A License File](#).



The screenshot shows a 'Licensing' dialog box with a close button (X) in the top right corner. It is divided into two main sections. The left section, titled 'License options:', contains four radio buttons: 'Evaluation', 'Activation code' (which is selected), 'Network license server', and 'License file'. The right section, titled 'Current license information', displays the following details: 'Status: Invalid', 'Expiration: N/A', and 'License: N/A'. Below these sections, there is a text prompt 'Please enter an activation code:' followed by a text input field containing the placeholder text 'XXXX-XXXX-XXXX-XXXX'. At the bottom of the dialog, there are three buttons: 'Activate', 'Cancel', and 'Help'.

To activate the product, simply enter or paste your activation code in the field provided. Then click **Activate**.

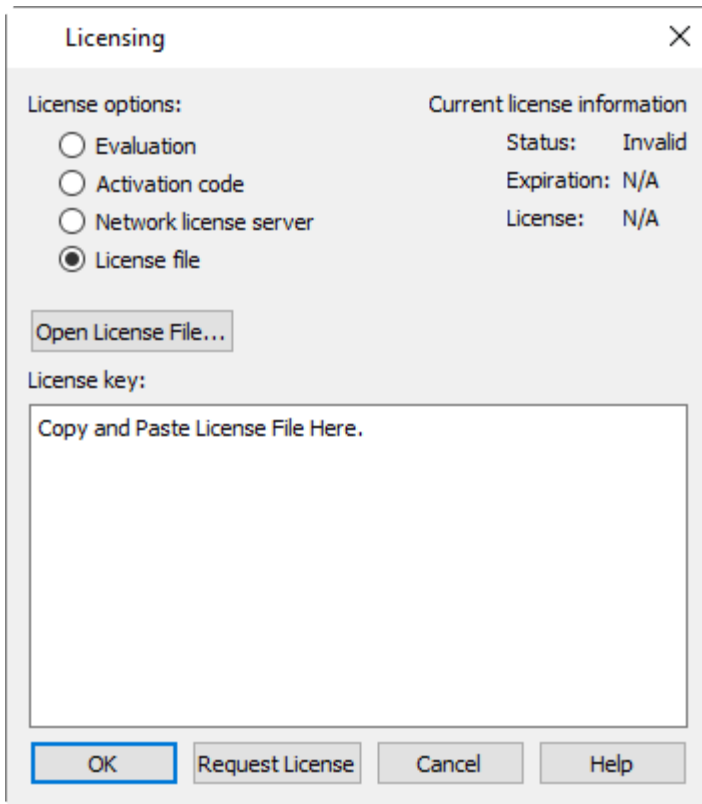
The license key corresponding to your activation code is downloaded to your computer, and Tecplot Focus uses that license.

# Single-User License Setup Using A License File

You will need the license file sent to you by Tecplot, Inc. If it was provided to you as an e-mail attachment, please save it to a file on your computer in an easy-to-find location, such as the Desktop.



If you do not have your license file, or have lost it, click **Request License** in the Tecplot Licensing dialog for instructions on how to obtain it.



1. Make sure the "License File" option is selected in the Licensing dialog.
2. If you received the text of the license file as text in an e-mail, copy the text from the e-mail (**Ctrl** + **C**) and paste it into the License Key field (**Ctrl** + **V**).

If you received the license as a file attachment, click **Open License File**. A file browser appears. Select the license file you were e-mailed, then click **Open**.

Either way, the message "Status: Valid" appears in the Current License Information panel at the upper right.

3. Click **OK** to save the license information.

Tecplot Focus now uses the chosen license.

If your license requires a USB license security key ("dongle"), make sure it is connected to your computer before launching Tecplot Focus. It must remain connected while the product is running.

## Network License Setup



To use a network license, you or your system administrator must first install the Reprise License Manager (RLM) version 11 or newer and the license key for your product on a network server. (See the installation instructions included with the RLM download.) Once this has been accomplished, follow these steps:

1. Make sure the "Network" license type is selected in the Tecplot Licensing dialog.
2. Enter the server name (you may use a hostname or IP address) and port number of the license server in the fields provided. In most cases, the default port number will work; only change it if your administrator tells you to.
3. Click **OK** to save the license information.

Tecplot Focus will now use a license obtained from the license server.

If the product is unable to obtain a license key, an error message will appear, and you should verify that you have specified the correct network license information.

## Useful Information

This chapter includes handy tips for running Tecplot Focus on your machine(s). Topics include the following:

- [User Documentation Sources](#)
- [License Type Definitions](#)

- [Using Licenses Over a Network](#)
- [Licensing Issues](#)
- [Obtaining License Key Files](#)
- Remember to specify your license number and include your Host ID information from `myhostids.txt` when requesting a license key file. You can find `myhostids.txt` in your Tecplot Focus installation folder.

## User Documentation Sources

### Where can I get help understanding Tecplot Focus?

Tecplot Focus includes access to the following manuals, HTML Help, and an online forum to help you explore all of Tecplot Focus's features. Your installation includes these manuals in the `doc` folder within your installation folder.

#### Installation Guide

The instructions you're reading now to learn how to install Tecplot Focus on your machine.

#### User's Manual

This manual provides a complete description of working with Tecplot Focus features.

#### Scripting Guide

This guide provides Macro and Python command syntax and information on working with Macro and Python files and commands.

#### Quick Reference Guide

This guide provides syntax for zone header files, macro variables, keyboard shortcuts, and more.

#### Data Format Guide

This guide provides information on outputting simulator data to Tecplot file formats.

#### Release Notes

These notes provide information about new and/or updated Tecplot Focus features.

#### Integrated Help

This indexed, searchable form of information about Tecplot Focus is accessible by choosing "Tecplot Focus Help" from the **Help** menu.

## License Type Definitions

### What license options do I have?

Three basic license types govern usage of Tecplot Focus on supported platforms: **Evaluation** licenses,

**Single-User** licenses, and **Network** licenses. Please see the license agreement, [license.html](#), located inside the installation directory for the definitions of each license type.

## Using Licenses Over a Network

### How does a network license work?

When you open Tecplot Focus from a local machine on the network, it contacts the license server via TCP/IP and "checks out" a key from the license manager. When you exit the program, Tecplot Focus returns the key. The license manager limits the number of Tecplot Focus sessions currently active to the number of users allowed by the license.

## Licensing Issues

### I cannot get my license key to work!

An error message appears if the license configuration file cannot be located, or if it does not contain a valid license key (for a **Single-User** license) or license server address (for a **Network** license) from which a valid license can be obtained.

If you have a **Network** license, obtain the address of the license server you should use. If you have a **Single-User** license, contact [support@tecplot.com](mailto:support@tecplot.com) to obtain a valid license key file. After obtaining either the address or the license key, install it following the procedure described in [Licensing](#).

## Obtaining License Key Files

### How do I get a license key?

The easiest way to activate a single-user license is to use an activation code. Tecplot Focus obtains the actual license key and installs it for you. If this is not possible, you may request a license key file using one of these methods:

#### Internet

[my.tecplot.com/portal/licenses-keys](http://my.tecplot.com/portal/licenses-keys)

Sign in to My Tecplot, choose your product, and follow the instructions to receive your license file. It is usually the fastest way to receive your license key.

#### E-mail

[support@tecplot.com](mailto:support@tecplot.com)

#### Telephone

+1-425-653-9393

Remember to specify your license number and include your Host ID information from [myhostids.txt](#)

when requesting a license key file. You can find `myhostids.txt` in your Tecplot Focus installation folder.



On most platforms, `myhostids.txt` is generated during installation. On Mac, it is generated when you open the license dialog and click Request License. After a fresh install, then, Mac users must launch Tecplot Focus and click Request License in the license dialog to generate `myhostids.txt`. This file is needed to request a license key. It is not needed if you have an activation code, however.

# Copyright

Tecplot Focus Installation Guide is for use with Tecplot Focus 2025 R1.

Copyright © 1988-2025 Tecplot, Inc. All rights reserved worldwide. Except for personal use, this manual may not be reproduced, transmitted, transcribed, stored in a retrieval system, or translated in any form, in whole or in part, without the express written permission of Tecplot, Inc., 3535 Factoria Blvd, Ste. 550; Bellevue, WA 98006 U.S.A.

The software discussed in this documentation and the documentation itself are furnished under license for utilization and duplication only according to the license terms. The copyright for the software is held by Tecplot, Inc. Documentation is provided for information only. It is subject to change without notice. It should not be interpreted as a commitment by Tecplot, Inc. Tecplot, Inc. assumes no liability or responsibility for documentation errors or inaccuracies.

Tecplot, Inc.  
Post Office Box 52708  
Bellevue, WA 98015-2708 U.S.A.

Tel: 1.800.763.7005 (within the U.S. or Canada), 00 1 (425) 653-1200 (internationally)

E-mail: [sales@tecplot.com](mailto:sales@tecplot.com), [support@tecplot.com](mailto:support@tecplot.com)  
Questions, comments or concerns regarding this document: [support@tecplot.com](mailto:support@tecplot.com)

For more information, visit [www.tecplot.com](http://www.tecplot.com)

Tecplot®, Tecplot 360,™ Tecplot 360 EX,™ Tecplot Focus, the Tecplot product logos, Preplot,™ Enjoy the View,™ Master the View,™ SZL,™ Sizzle,™ and Framer™ are registered trademarks or trademarks of Tecplot, Inc. in the United States and other countries. All other product names mentioned herein are trademarks or registered trademarks of their respective owners.

## NOTICE TO U.S. GOVERNMENT END-USERS

Use, duplication, or disclosure by the U.S. Government is subject to restrictions as set forth in subparagraphs (a) through (d) of the Commercial Computer-Restricted Rights clause at FAR 52.227-19 when applicable, or in subparagraph (c)(1)(ii) of the Rights in Technical Data and Computer Software clause at DFARS 252.227-7013, and/or in similar or successor clauses in the DOD or NASA FAR Supplement. Contractor/manufacturer is Tecplot, Inc., 3535 Factoria Blvd, Ste. 550; Bellevue, WA 98006 U.S.A.

Part Number: 23-360-07-2 Build Revision {CI\_PIPELINE\_ID}

Released: 06/2025

For third-party trademark and copyright information, see the [User's Manual](#).